

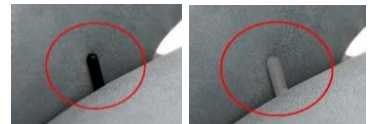
Model: **8100 - SlimLine 2.0**



Manual function chair

360° swivel Relax-chair with manually adjustable backrest, footstool and headrest.

Inner handle for back in two colors black or brushed. Always on the right side.



Electric function chair

360° swivel 3-motors Relax-chair with motor-adjustable backrest, footstool and headrest.

Electric function including 3 motors (adjustable footrest + backrest + headrest)

Control panel (Black).

Option: battery. Additional price.



Model: **8100 - SlimLine 2.0**

MANUAL

360° swivel Relax-chair with manually adjustable backrest, footstool and headrest.



Gas lift height adjustment (GL)

For manual & electric chair.



Additional price for approx. 6 cm height adjustment of the chair by gas lift. Available only for Orion Base (OS/OSS), Elegant Base (EB/EBS) & Sirius Base (SB/SBS). Brushed or Black handle color always on the right side.

Measurements	<u>Small:</u> W H D SD SH 73 105 83 52 44	<u>Medium:</u> W H D SD SH 73 108 86 52 46	<u>Large:</u> W H D SD SH 76 111 86 55 48			
Description	Small / Medium/ Large Manual chair - the same price for each size					
	Base A	Base B	Base C	Base D		
Item type	SF5M - Small MF5M - Medium LF5M - Large	SF5M - Small MF5M - Medium LF5M - Large	SF5M - Small MF5M - Medium LF5M - Large	SF5M - Small MF5M - Medium LF5M - Large		
<u>Leather groups</u>						
Anilux	all over					
Nubuck(Semi)	all over					
Semi	all over					
Soleda						
Madras	skai					
<u>Fabric groups</u>						
Group	0					
Group	1					
Group	2					
Group	3					
Group	4					
Group	5					

Model: **8100 - SlimLine 2.0**

ELECTRIC

360° swivel 3-motors Relax-chair with motor-adjustable backrest, footstool and headrest.



Measurements	<u>Small:</u> W H D SD SH 73 105 83 52 44	<u>Medium</u> W H D SD SH 73 108 86 52 46	<u>Large</u> W H D SD SH 76 111 86 55 48			
Description	Small / Medium/ Large Electric 3 motors chair - the same price for each size					
	Base A	Base B	Base C	Base D		
Item type	SF5EL3 - Small MF5EL3 - Medium LF5EL3 - Large	SF5EL3 - Small MF5EL3 - Medium LF5EL3 - Large	SF5EL3 - Small MF5EL3 - Medium LF5EL3 - Large	SF5EL3 - Small MF5EL3 - Medium LF5EL3 - Large		

Leather groups						
Anilux	all over					
Nubuck(Semi)	all over					
Semi	all over					
Soleda						
Madras	skai					

Fabric groups						
Group	0					
Group	1					
Group	2					
Group	3					
Group	4					
Group	5					

Types of additions:

Akkumulator price:

Model: **8100 - SlimLine 2.0**

BASE

Base A



OS Orion-Base - Chrome



OSS Orion-Base - Black matt



PB Polaris-Base - Chrome



PBS Polaris-Base - Black

Gas lift for Orion Base available!

Base B



TS Tube Space base - brushed



TSS2 Tube Space base - black

(Tube Space TS or TSS2: Chair H: +2 cm, SH +2cm)

Base C



DBB Disc Metal brushed



- DBS** Disc black
- DBEO** Disc oak oiled
- DBR3** Disc nut oiled
- DBEW** Disc oak oiled white
- DBE** Disc oak untreated

- DBU** Disc beech untreated
- DBEL** Disc oak lacquered
- DBBL** Disc beech lacquered
- DBWN** Disc beech, lacquered nut
- DBV3** Disc oak smoked

Base D



EB Elegant Base - Silver



EBS Elegant Base - Black

Gas lift for Elegant Base (EB/EBS) Sirius Base (SB/SBS) available!



SB Sirius Base - Brushed



SBS Sirius Base - Black



- WSK** Woodstar black
- WSG** Woodstar oak oiled
- WSR3** Woodstar nut oiled
- WSM** Woodstar oak oiled white
- WSH** Woodstar oak untreated

- WSD** Woodstar beech untreated
- WSF** Woodstar oak lacquered
- WSC** Woodstar beech lacquered
- WSW** Woodstar beech, lacquered nut
- WSV3** Woodstar oak smoked