

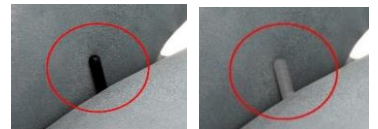
Model: **8005 - Superior**



Manual function chair

360° swivel Relax-chair with manually adjustable backrest, footstool. Fixed headrest.

Inner handle for back in two colors black or brushed. Always on the right side.



Electric function chair

360° swivel 2-motors Relax-chair with motor-adjustable backrest, footstool. Fixed headrest.

Electric function including 2 motors (adjustable footrest + backrest)

Control panel in two colors: black or brushed.

Option: battery. Additional price.



Model: **8005 - Superior**

MANUELL

360° swivel Relax-chair with manually adjustable backrest, footstool. Fixed headrest.



| | | | | | | | |
|-----------------------|----------------|-------------------------|--------|--------|--------|--|--|
| Measurements | | W H D S D SH | | | | | |
| | | 73 106 82 52 46 | | | | | |
| Description | Chair - Manual | | | | | | |
| | | Base A | Base B | Base C | Base D | | |
| Item type | | F3M | F3M | F3M | F3M | | |
| Leather groups | | | | | | | |
| Anilux | all over | | | | | | |
| Concrete | all over | | | | | | |
| Nubuck(Semi) | all over | | | | | | |
| Semi | all over | | | | | | |
| Soleda | | | | | | | |
| Madras | skai | | | | | | |
| Fabric groups | | | | | | | |
| Group | 0 | | | | | | |
| Group | 1 | | | | | | |
| Group | 2 | | | | | | |
| Group | 3 | | | | | | |
| Group | 4 | | | | | | |
| Group | 5 | | | | | | |

Model: **8005 - Superior**

ELECTRIC

360° swivel 2-motors Relax-chair with motor-adjustable backrest, footstool. Fixed headrest.



| | | | | | | | |
|----------------------------|---------------------------|--|--------|--------|--|--|--|
| Measurements | | W H D S D I S H 73 106 82 52 46 | | | | | |
| Description | Chair - Electric 2 motors | | | | | | |
| | Base A | Base B | Base C | Base D | | | |
| Item type | F3EL2 | F3EL2 | F3EL2 | F3EL2 | | | |
| Leather groups | | | | | | | |
| Anilux | all over | | | | | | |
| Concrete | all over | | | | | | |
| Nubuck(Semi) | all over | | | | | | |
| Semi | all over | | | | | | |
| Soleda | | | | | | | |
| Madras | skai | | | | | | |
| Fabric groups | | | | | | | |
| Group | 0 | | | | | | |
| Group | 1 | | | | | | |
| Group | 2 | | | | | | |
| Group | 3 | | | | | | |
| Group | 4 | | | | | | |
| Group | 5 | | | | | | |
| Types of additions: | | | | | | | |

Model: **8005 - Superior**

BASE

Base A



OS Orion-Base - Chrome



OSS Orion-Base - Black matt



PB Polaris-Base - Chrome



PBS Polaris-Base - Black

Base B



TS Tube Space base - brushed



TSS2 Tube Space base - black

(Tube Space TS or TSS2: Chair H: +2 cm, SH +2cm)

Base C



DBB Disc Metal brushed



- DBS** Disc black
- DBEO** Disc oak oiled
- DBR3** Disc nut oiled
- DBEW** Disc oak oiled white
- DBE** Disc oak untreated

- DBU** Disc beech untreated
- DBEL** Disc oak lacquered
- DBBL** Disc beech lacquered
- DBWN** Disc beech, lacquered nut
- DBV3** Disc oak smoked

Base D



EB Elegant Base - Silver



EBS Elegant Base - Black



SB Sirius Base - Brushed



SBS Sirius Base - Black



- WSK** Woodstar black
- WSG** Woodstar oak oiled
- WSR3** Woodstar nut oiled
- WSM** Woodstar oak oiled white
- WSH** Woodstar oak untreated

- WSD** Woodstar beech untreated
- WSF** Woodstar oak lacquered
- WSC** Woodstar beech lacquered
- WSW** Woodstar beech, lacquered nut
- WSV3** Woodstar oak smoked